

KUROTAKISAN MARU III 89,999 DWT Bulk Carrier 27

[Contents](#)

[By Builder](#)

[By Ship Type](#)



KUROTAKISAN MARU III 89,999 DWT Bulk Carrier 27

Contents

By Builder

By Ship Type

Oshima Shipbuilding Co., Ltd. delivered KUROTAKISAN MARU III, a 89,999-DWT bulk carrier, to NOVA TRANSPORT INC. in December 2021.

Features

1. Double hull structure and Box type cargo hold with top-side tanks to improve coal unloading efficiency.
2. Elimination of the use of ballast water in cargo holds to reduce the risk of salt, rust, and other contaminants in cargo holds.
3. Advanced Flipper Fins & Rudder Fin which improve propulsion efficiency are installed.

PRINCIPAL PARTICULARS

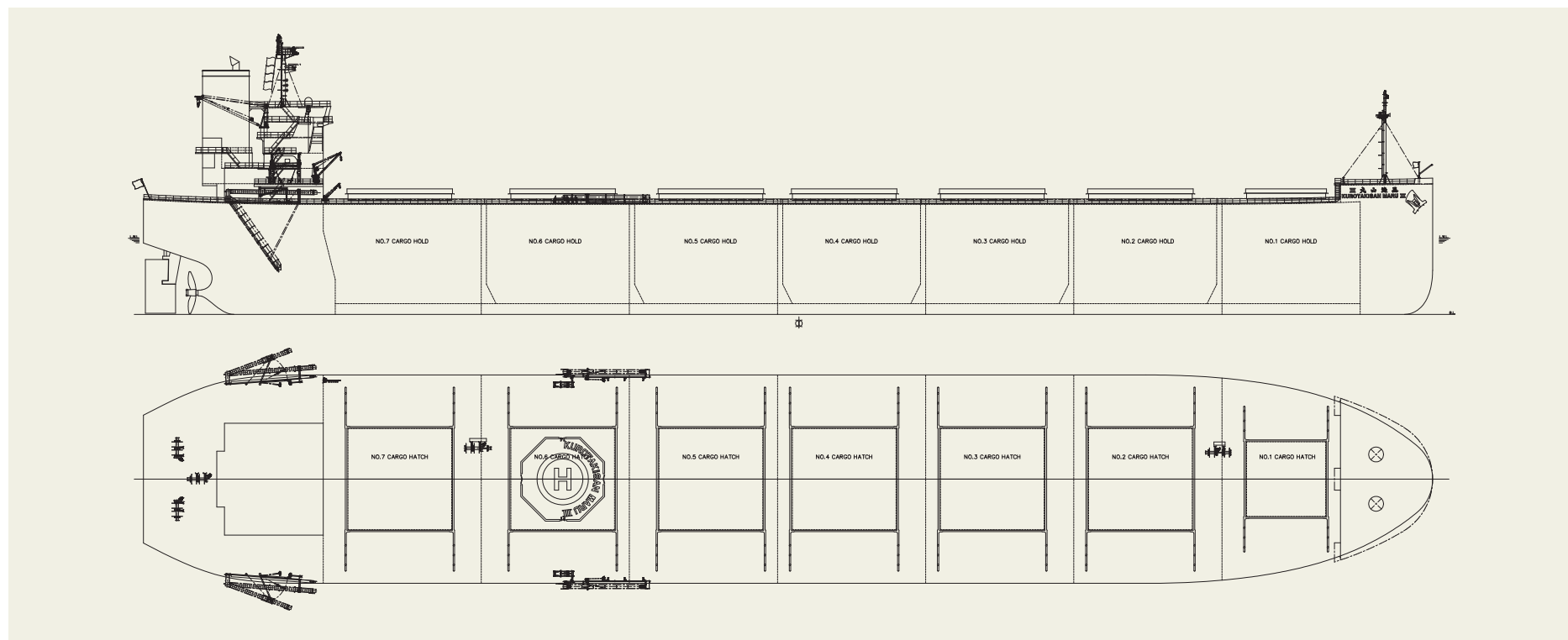
Length (o.a.)	234.96 m
Breadth (mld.)	38.00 m
Depth (mld.)	20.05 m
Draft (mld.)	13.86 m
Gross tonnage	51,793
Deadweight	89,999 MT

Main engine	J-ENG UE 6UEC60LSE-Eco-A2-EGR
MCR (kw x rpm)	9,700 kW x 84.0 rpm
Speed (service)	14.00 knots
Complement	25
Classification	NK
Loading capacity (grain)	107,260 m ³
Builder	Oshima Shipbuilding Co., Ltd.

4. Special bow form, Seaworthy Bow improves speed performance in rough sea conditions as compared to

ordinary bows.

5. SOx scrubber is installed for environmental friendliness.



TAHO EUDAIMONIA 84,460 DWT Bulk Carrier 28

[Contents](#)

[By Builder](#)

[By Ship Type](#)



TAHO EUDAIMONIA 84,460 DWT Bulk Carrier 28

Contents By Builder By Ship Type

Oshima Shipbuilding Co., Ltd. delivered TAHO EUDAIMONIA, a 84,460-DWT bulk carrier, to THC INTERNATIONAL S.A. in February 2022.

Features

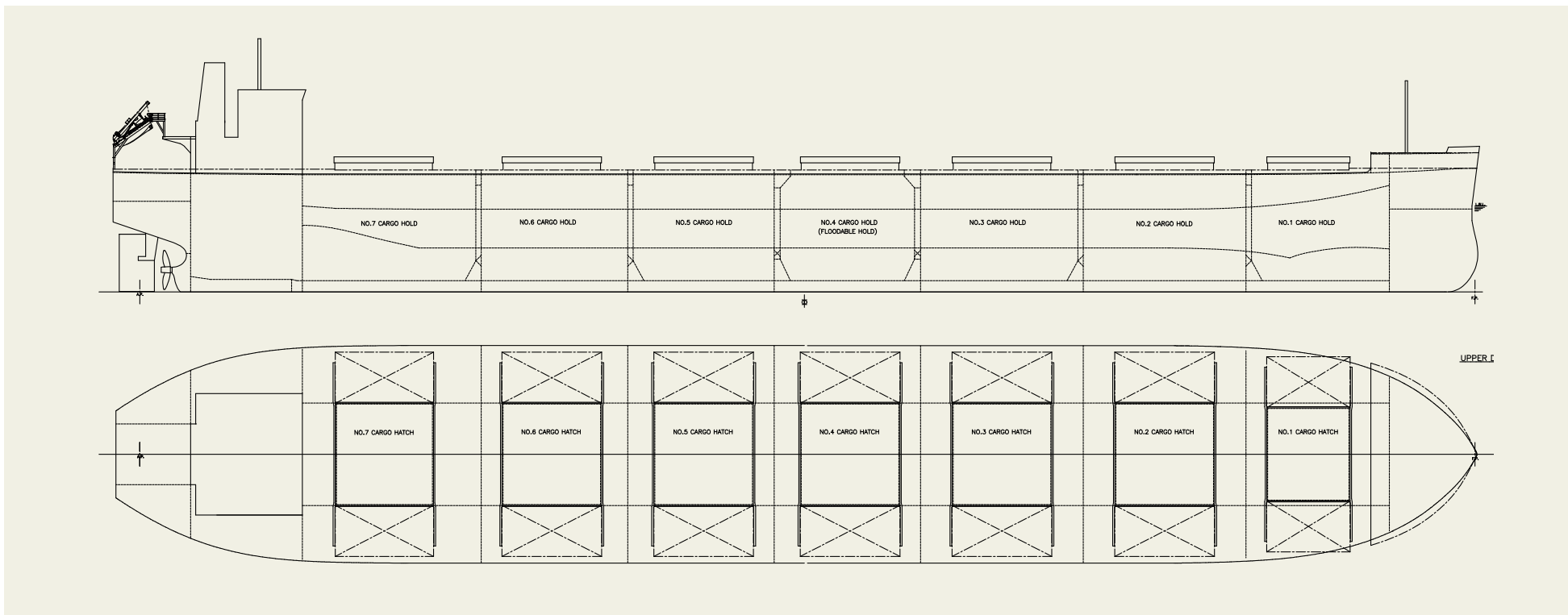
1. This vessel has an optimized hull form for carrying a variety of cargoes, such as grain, ore, coal and steel slab or steel billet and large deadweight(84,460 MT) with shallow draft (13.95 m)
2. Wide hatch cover improves cargo handling efficiency.
3. Advanced Flipper Fins & Rudder Fin which improve propulsion efficiency are installed.

PRINCIPAL PARTICULARS

Length (o.a.).....	228.41 m
Breadth (mld.).....	36.50 m
Depth (mld.).....	19.89 m
Draft (mld.).....	13.95 m
Gross tonnage.....	46815
Deadweight.....	84,460 MT

Main engine	MITSUI MAN B&W 6S60ME-C8.5-EGRBP
MCR (kw x rpm)	9,120 kW x 84.0 rpm
Speed (service).....	14.10 knots
Complement.....	25
Classification.....	ABS
Loading capacity (grain).....	102,988 m ³
Builder.....	Oshima Shipbuilding Co., Ltd.

4. Special bow form, Seaworthy Bow improves speed performance in rough sea conditions as compared to ordinary bows.



CEMTEX EXCELLENCE 99,990 DWT Bulk Carrier 29

[Contents](#)

[By Builder](#)

[By Ship Type](#)



CEMTEX EXCELLENCE 99,990 DWT Bulk Carrier 29

Contents By Builder By Ship Type

Oshima Shipbuilding Co., Ltd. delivered CEMTEX EXCELLENCE, a 99,990-DWT bulk carrier, U-Ming Marine Transport Corporation in March 2022.

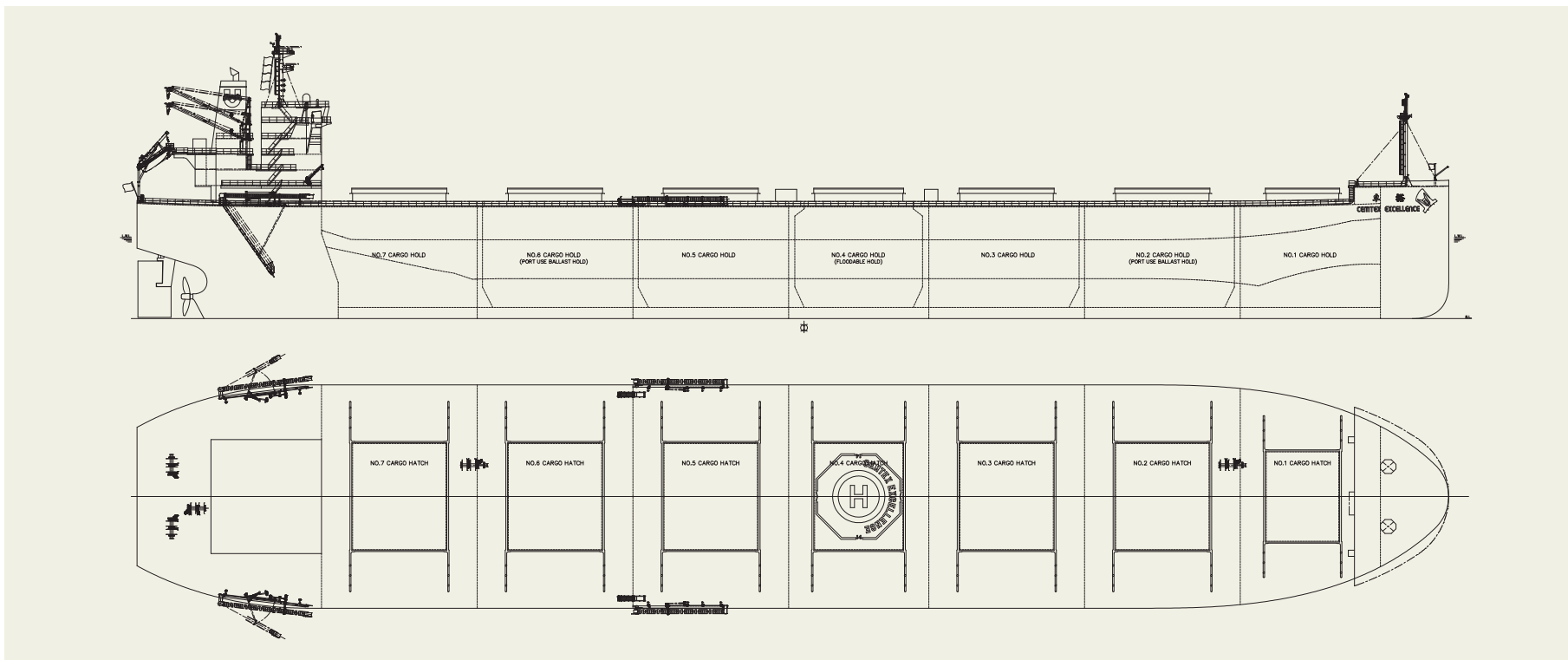
Features

1. This vessel has a wider width (40.0 m) and larger cargo hold that allow to carry more cargo than a vessel with the approximately same DWT.
2. Wide hatch cover improves cargo handling efficiency.
3. Advanced Flipper Fins & Rudder Fin which improve propulsion efficiency are installed.
4. Special bow form, Seaworthy Bow improves speed

PRINCIPAL PARTICULARS

Length (o.a.)	235.00 m	MCR (kw x rpm)	10,000 kW x 76.0 rpm
Breadth (mld.)	40.00 m	NOR (kw x rpm)	7,810 kW x 70.0 rpm
Depth (mld.)	20.00 m	Speed (service)	14.30 knots
Draft (mld.)	14.415 m	Complement	25
Gross tonnage	54244	Classification	NK/CR
Deadweight	99,990 MT	Loading capacity (grain)	118,908 m ³
Main engine	MITSUI-MAN B&W 6G60ME-C10.5	Builder	Oshima Shipbuilding Co., Ltd.

performance in rough sea conditions as compared to ordinary bows.



SHOFU MARU 100,422 DWT Bulk Carrier 30

[Contents](#)

[By Builder](#)

[By Ship Type](#)



SHOFU MARU 100,422 DWT Bulk Carrier 30
[Contents](#)
[By Builder](#)
[By Ship Type](#)

Oshima Shipbuilding Co., Ltd. delivered SHOFU MARU, a 100,422-DWT bulk carrier, to Mitsui O.S.K. Lines, Ltd. in October 2022.

Features

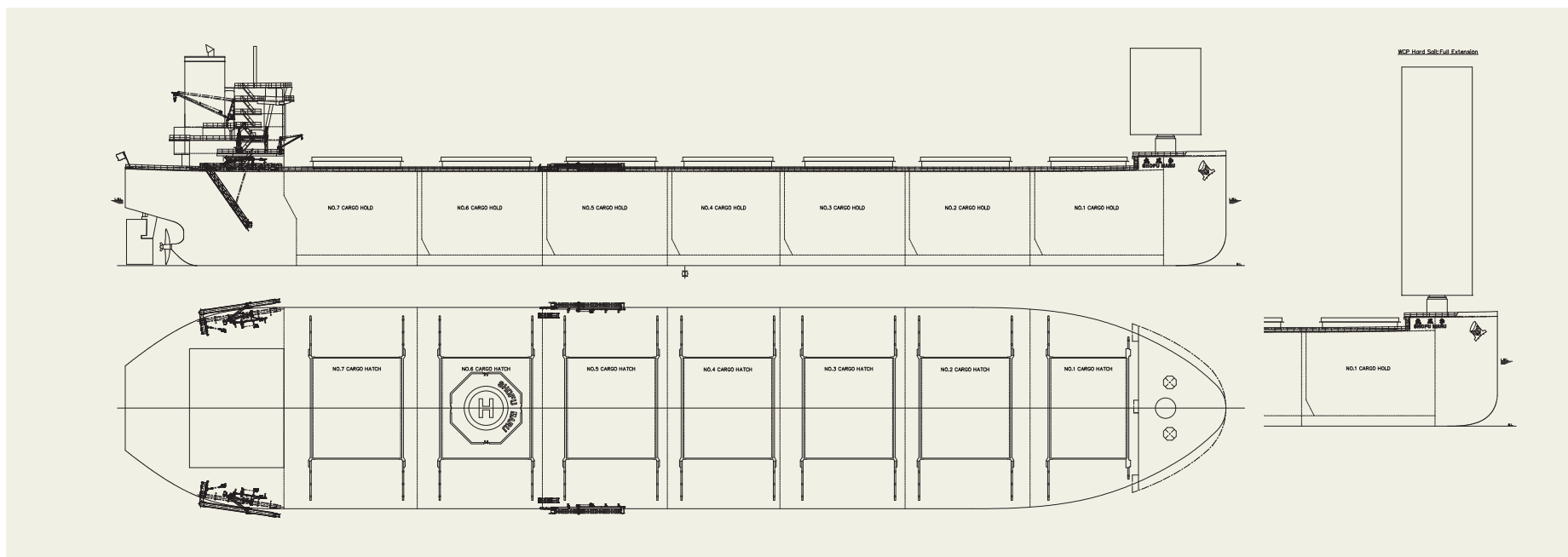
1. This is the 1st delivered vessel with a hard sail, so-called "Wind Challenger," which is wind power propulsion system.
2. The hard sail which consist of three FRP (Fiber Reinforced Plastics) sails and one steel sail is extended and reefed automatically in response to the wind conditions and ship motion.
3. The height of the sail from the main deck is about 53m with all sails fully extended and is about 20m with all sails reefed, and the direction of the sail can rotate 180 degrees.

PRINCIPAL PARTICULARS

Length (o.a.)	235.00 m
Breadth (mld.)	43.00 m
Depth (mld.)	20.05 m
Draft (mld.)	13.88 m
Gross tonnage	58209
Deadweight	100,422 MT

Main engine	MITSUI MAN B&W 6S60ME-C10.5-EGRBP
MCR (kw x rpm)	9,180 kW × 84.0 rpm
Speed (service)	14.30 knots
Complement	25
Classification	NK
Loading capacity (grain)	115,304 m ³
Builder	Oshima Shipbuilding Co., Ltd.

4. The width of the sail is about 15m and complies with SOLAS regulation for visibility from wheel house.
5. By slewing in an appropriate direction, a large amount of wind forces is converted into the propulsive force of the ship and reduce fuel consumption.
6. Advanced Flipper Fins & Rudder Fin which improve propulsion efficiency are installed.
7. Special bow form, Seaworthy Bow improves speed performance in rough sea conditions as compared to ordinary bows.



CLIMATE RESPECT 87,290 DWT Bulk Carrier 31

[Contents](#)

[By Builder](#)

[By Ship Type](#)



CLIMATE RESPECT 87,290 DWT Bulk Carrier 31

Contents By Builder By Ship Type

Oshima Shipbuilding Co., Ltd. delivered CLIMATE RESPECT, a 87,290-DWT bulk carrier, to LOFOU SHIPPING CORPORATION in July 2022.

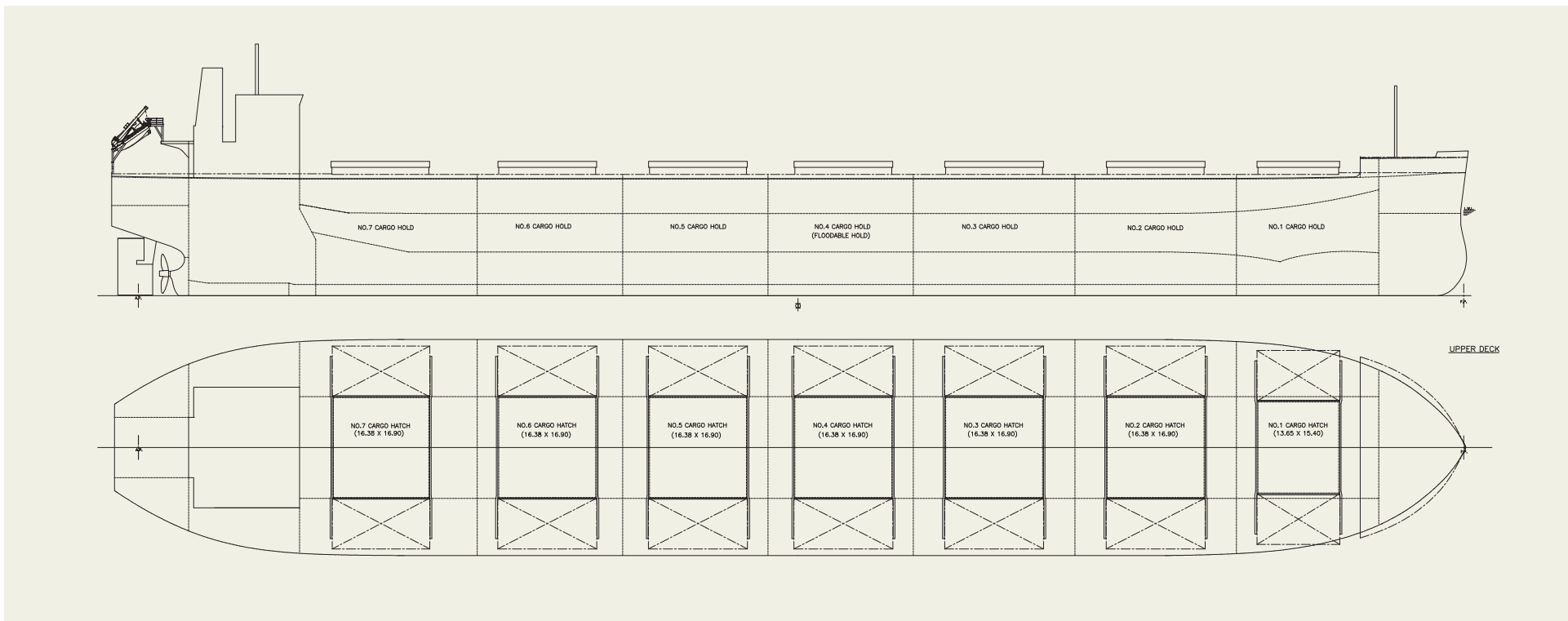
Features

1. This vessel has an optimized hull form for carrying grain, ore, and coal, and large deadweight (87,290 MT) with shallow draft (14.322m)
2. Wide hatch cover improves cargo handling efficiency.
3. Advanced Flipper Fins & Rudder Fin which improve propulsion efficiency are installed.
4. Special bow form, Seaworthy Bow improves speed

PRINCIPAL PARTICULARS

Length (o.a.).....	228.41 m	Main engine	MITSUI MAN B&W 5S60ME-C10.5-EGRBP
Breadth (mld.).....	36.50 m	MCR (kw x rpm)	8,180 kW x 84.0 rpm
Depth (mld.).....	20.39 m	Speed (service).....	14.30 knots
Draft (mld.).....	14.322 m	Complement.....	25
Gross tonnage.....	48233	Classification.....	NK
Deadweight.....	87,290 MT	Loading capacity (grain).....	106,222 m ³
		Builder.....	Oshima Shipbuilding Co., Ltd.

performance in rough sea conditions as compared to ordinary bows.



SHOHO MARU III 89,992 DWT Bulk Carrier 32

[Contents](#)

[By Builder](#)

[By Ship Type](#)



SHOHO MARU III 89,992 DWT Bulk Carrier 32

Contents By Builder By Ship Type

Oshima Shipbuilding Co., Ltd. delivered SHOHO MARU III , a 89,992-DWT bulk carrier, to OREGANO LINE S.A. in August 2023.

Features

1. This vessel has an optimized hull form for carrying coal, and large deadweight(89,992 MT) with shallow draft (13.839m)
2. Advanced Flipper Fins & Rudder Fin which improve propulsion efficiency are installed.
3. Special bow form, Seaworthy Bow improves speed

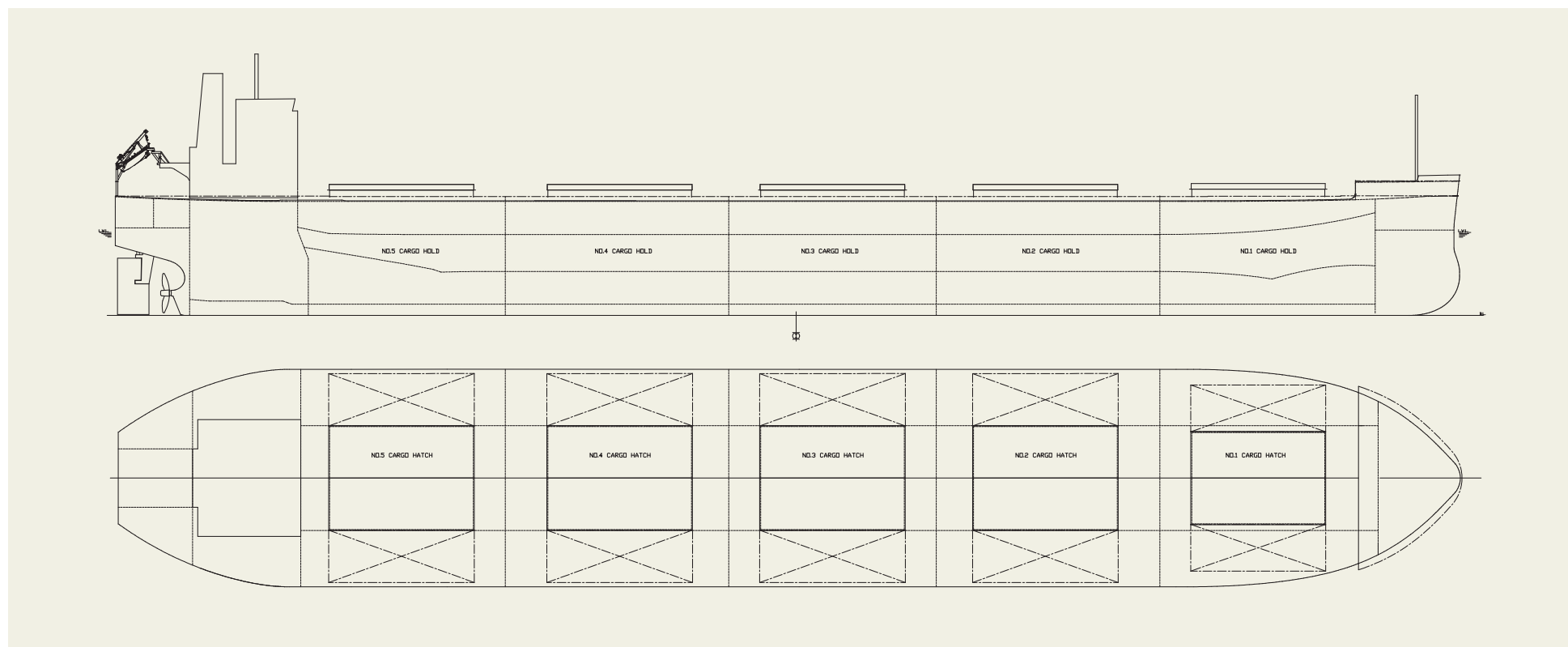
PRINCIPAL PARTICULARS

Length (o.a.)	234.98 m
Breadth (mld.).....	38.00 m
Depth (mld.).....	19.91 m
Draft (mld.).....	13.839 m
Gross tonnage.....	51027

Deadweight.....	89,992 MT
Main engine	MITSUI MAN B&W 6S60ME-C10.5-EGRBP
MCR (kw x rpm)	9,000 kW x 84.0 rpm
Speed (service).....	14.30 knots
Loading capacity (grain).....	110,529 m ³
Builder.....	Oshima Shipbuilding Co., Ltd.

performance in rough sea conditions as compared to ordinary bows.

4. Class NK's notation of "EA (Environmental Awareness)" is assigned.



KAGURA 99,990 DWT Bulk Carrier 33

[Contents](#)

[By Builder](#)

[By Ship Type](#)



KAGURA 99,990 DWT Bulk Carrier 33

Contents By Builder By Ship Type

Oshima Shipbuilding Co., Ltd. delivered KAGURA, a 99,990-DWT bulk carrier, to ERICA NAVIGATION S.A. in March 2023.

Features

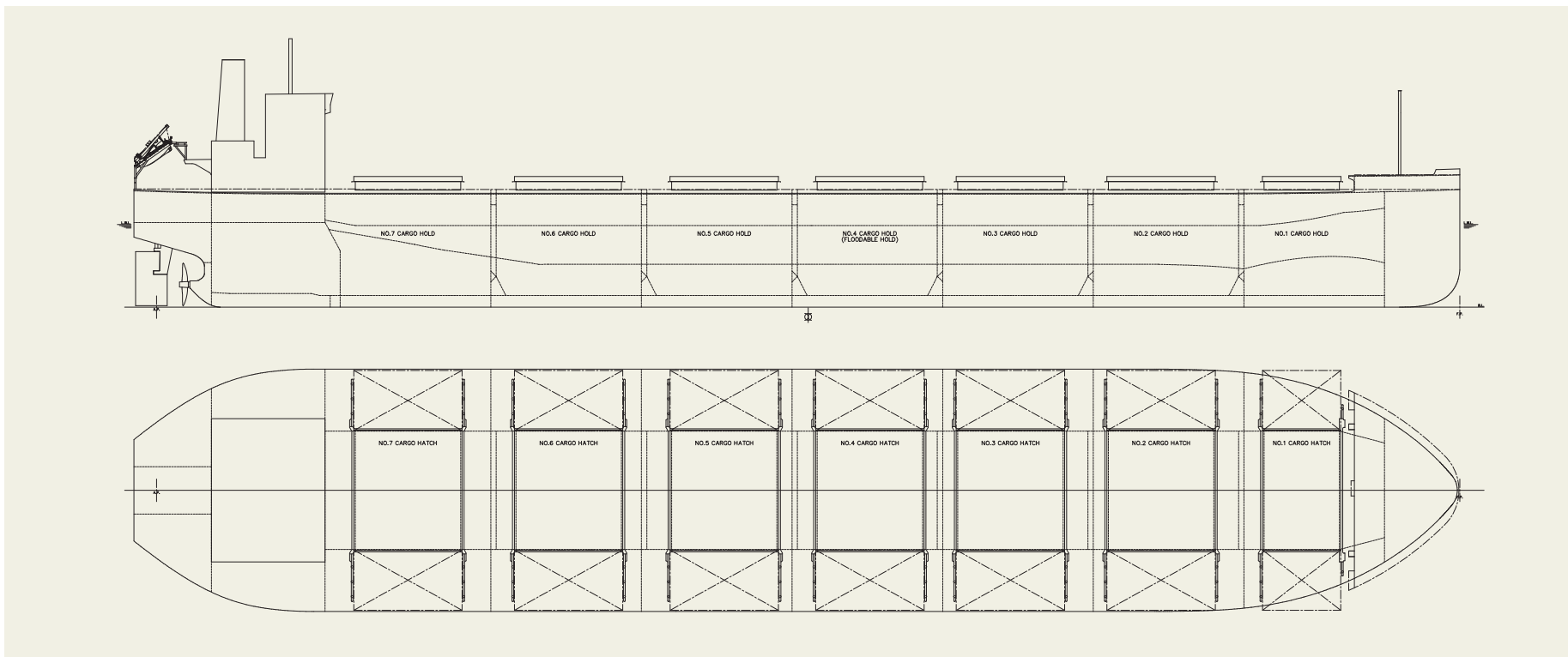
1. This vessel has an optimized hull form for carrying grain, ore, and coal, and large deadweight (99,990 MT)
2. Wide hatch cover improves cargo handling efficiency.
3. Advanced Flipper Fins & Rudder Fin which improve propulsion efficiency are installed.
4. Special bow form, Seaworthy Bow improves speed performance in rough sea conditions as compared to ordinary bows.

PRINCIPAL PARTICULARS

Length (o.a.).....	234.996 m
Breadth (mld.).....	43.00 m
Depth (mld.).....	20.05 m
Draft (mld.).....	13.829 m
Gross tonnage.....	57646
Deadweight.....	99,990 MT

Main engine	MITSUI MAN B&W 6S60ME-C10.5-EGRBP
MCR (kw x rpm)	10,000 kW x 85.0 rpm
Speed (service).....	14.30 knots
Complement.....	25
Classification	NK
Loading capacity (grain).....	123,592 m ³
Builder.....	Oshima Shipbuilding Co., Ltd.

5. SOx scrubber is installed for environmental friendliness.



SERENITY DIVA 87,396 DWT Bulk Carrier 34

[Contents](#)

[By Builder](#)

[By Ship Type](#)



SERENITY DIVA 87,396 DWT Bulk Carrier 34

Contents By Builder By Ship Type

Oshima Shipbuilding Co., Ltd. delivered SERENITY DIVA, a 87,396-DWT bulk carrier, to LUCRETIA SHIPPING, S.A. in June 2023.

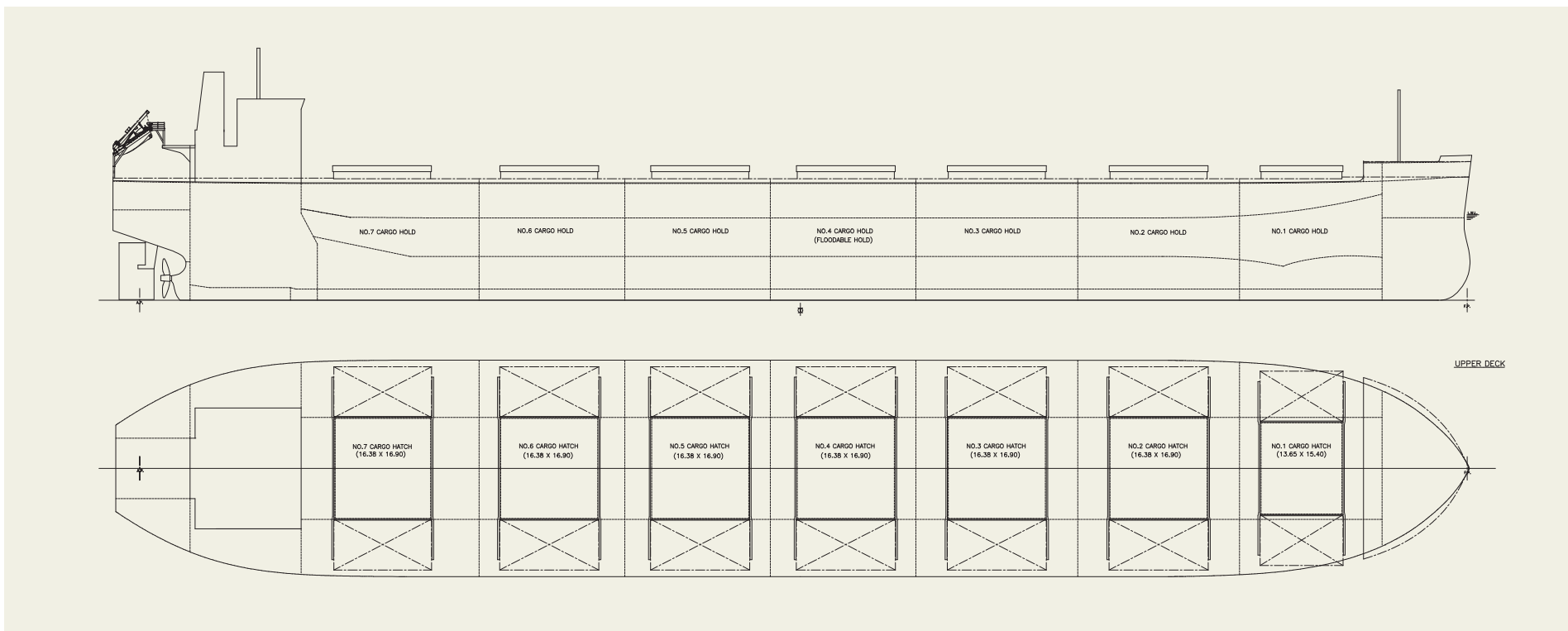
Features

1. This vessel has an optimized hull form for carrying grain, ore, coal, and cement, and large deadweight(87,396 MT) with shallow draft (14.322m)
2. Wide hatch cover improves cargo handling efficiency.
3. Advanced Flipper Fins & Rudder Fin which improve propulsion efficiency are installed.
4. Special bow form, Seaworthy Bow improves speed

PRINCIPAL PARTICULARS

Length (o.a.).....	228.41 m	Main engine	MITSUI MAN B&W 5S60ME-C10.5-EGRBP
Breadth (mld.).....	36.50 m	MCR (kw x rpm)	8,180 kW x 84.0 rpm
Depth (mld.).....	20.39 m	Speed (service).....	14.30 knots
Draft (mld.).....	14.322 m	Complement.....	25
Gross tonnage.....	48105	Classification.....	NK
Deadweight.....	87,396 MT	Loading capacity (grain).....	106,222 m ³
		Builder.....	Oshima Shipbuilding Co., Ltd.

performance in rough sea conditions as compared to ordinary bows.



WISDOM DIVA 82,216 DWT Bulk Carrier 36

[Contents](#)

[By Builder](#)

[By Ship Type](#)



Oshima Shipbuilding Co., Ltd. delivered WISDOM DIVA, a 82,216-DWT bulk carrier, to Minsheng Zhijie (Tianjin) Shipping Leasing Company Limited in May 2023.

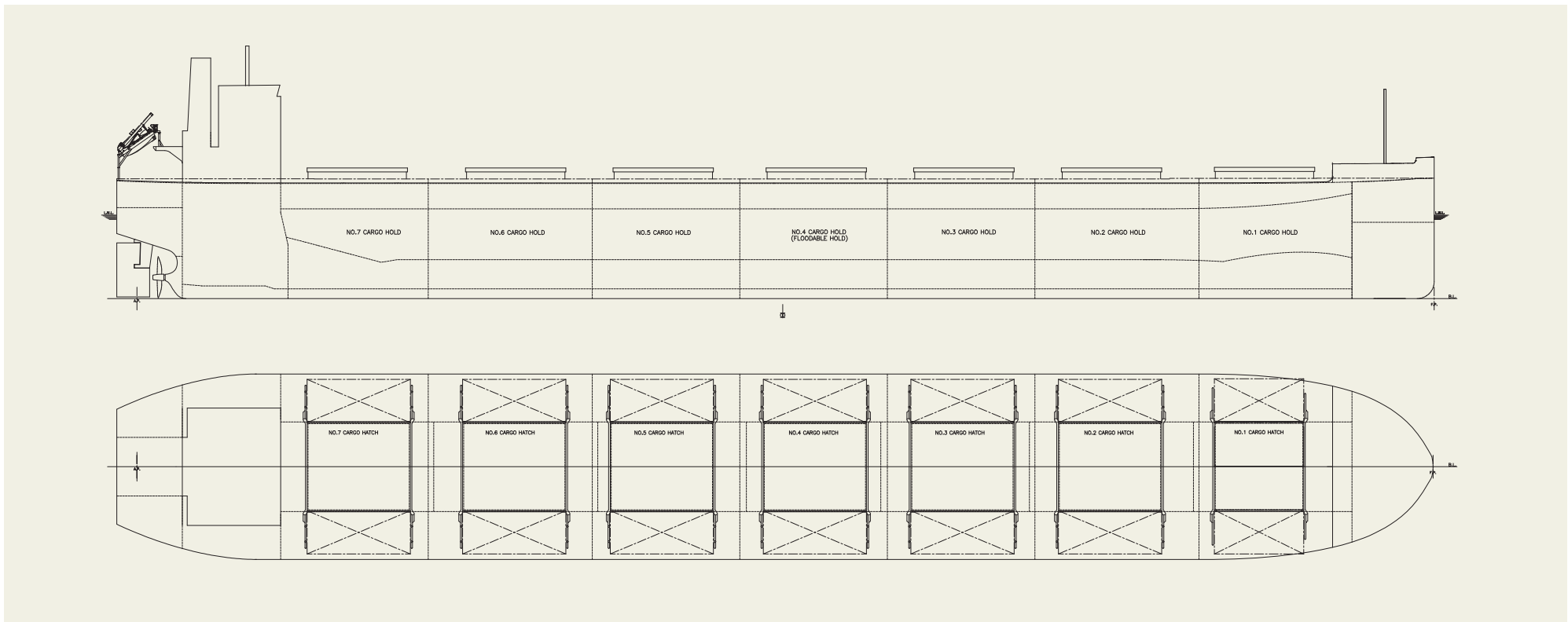
Features

1. This vessel has largest deadweight of Panamax bulkers in the world with shallow draft and Wide hatch cover improves cargo handling efficiency.
2. Advanced Flipper Fins & Rudder Fin which improve propulsion efficiency are installed. Special bow form, Seaworthy Bow improves speed performance in rough

PRINCIPAL PARTICULARS

Length (o.a.).....	228.995 m	Main engine	MITSUI MAN B&W 5S60ME-C10.5-EGRBP
Breadth (mld.).....	32.26 m	MCR (kw x rpm)	7,760 kW x 84.0 rpm
Depth (mld.).....	19.98 m	Speed (service).....	14.30 knots
Draft (mld.).....	14.480 m	Complement.....	25
Gross tonnage.....	43366	Classification.....	NK
Deadweight.....	82,216 MT	HLoading capacity (grain).....	97,416 m ³
		Builder.....	Oshima Shipbuilding Co., Ltd.

sea conditions as compared to ordinary bows.



RICH AZURE 64,452 DWT Bulk Carrier 42

[Contents](#)

[By Builder](#)

[By Ship Type](#)



RICH AZURE 64,452 DWT Bulk Carrier 42

Contents

By Builder

By Ship Type

Oshima Shipbuilding Co., Ltd. delivered RICH AZURE, a 64,452-DWT bulk carrier, to Inter Mers Shipping Pte. Ltd. in February 2023.

Features

1. This vessel has an optimized hull form for carrying grain, ore, coal, hot coil, cement and steel ingot /slabs/ billet, and large deadweight (64,452MT) with shallow draft (13.518 m).
2. Wide opening folding type hatch cover and four sets of high performance Jib cranes (30MT) are installed for efficient cargo handling.

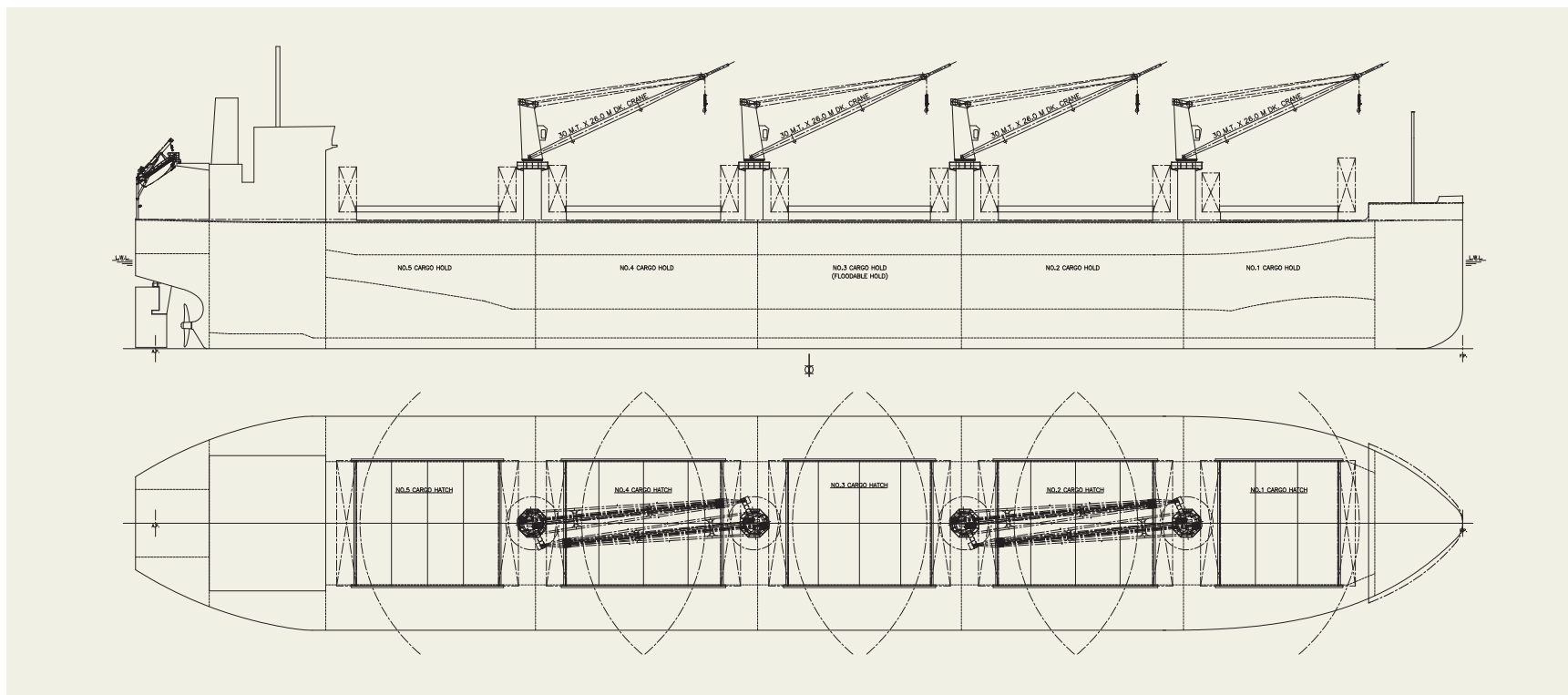
PRINCIPAL PARTICULARS

Length (o.a.).....	199.95 m
Breadth (mld.).....	32.26 m
Depth (mld.).....	19.28 m
Draft (mld.).....	13.518 m
Gross tonnage.....	36128
Deadweight.....	64,452 MT

Main engine.....	MITSUI MAN B&W 6S50ME-C9.7-EGRBP
MCR (kw x rpm).....	7,080 kW x 91.0 rpm
Speed (service).....	14.50 knots
Complement.....	25
Classification.....	NK
Loading capacity (grain).....	81,204 m ³
Builder.....	Oshima Shipbuilding Co., Ltd.

3. Advanced Flipper Fins & Rudder Fin which improve propulsion efficiency are installed.

4. Special bow form, Seaworthy Bow improves speed performance in rough sea conditions as compared to ordinary bows.



BOHOL ISLAND 39,260 DWT Bulk Carrier 49

[Contents](#)

[By Builder](#)

[By Ship Type](#)



BOHOL ISLAND 39,260 DWT Bulk Carrier 49

Contents By Builder By Ship Type

Oshima Shipbuilding Co., Ltd. delivered BOHOL ISLAND, a 39,260-DWT bulk carrier, to LEYTE NAVIGATION, S.A. in April 2022.

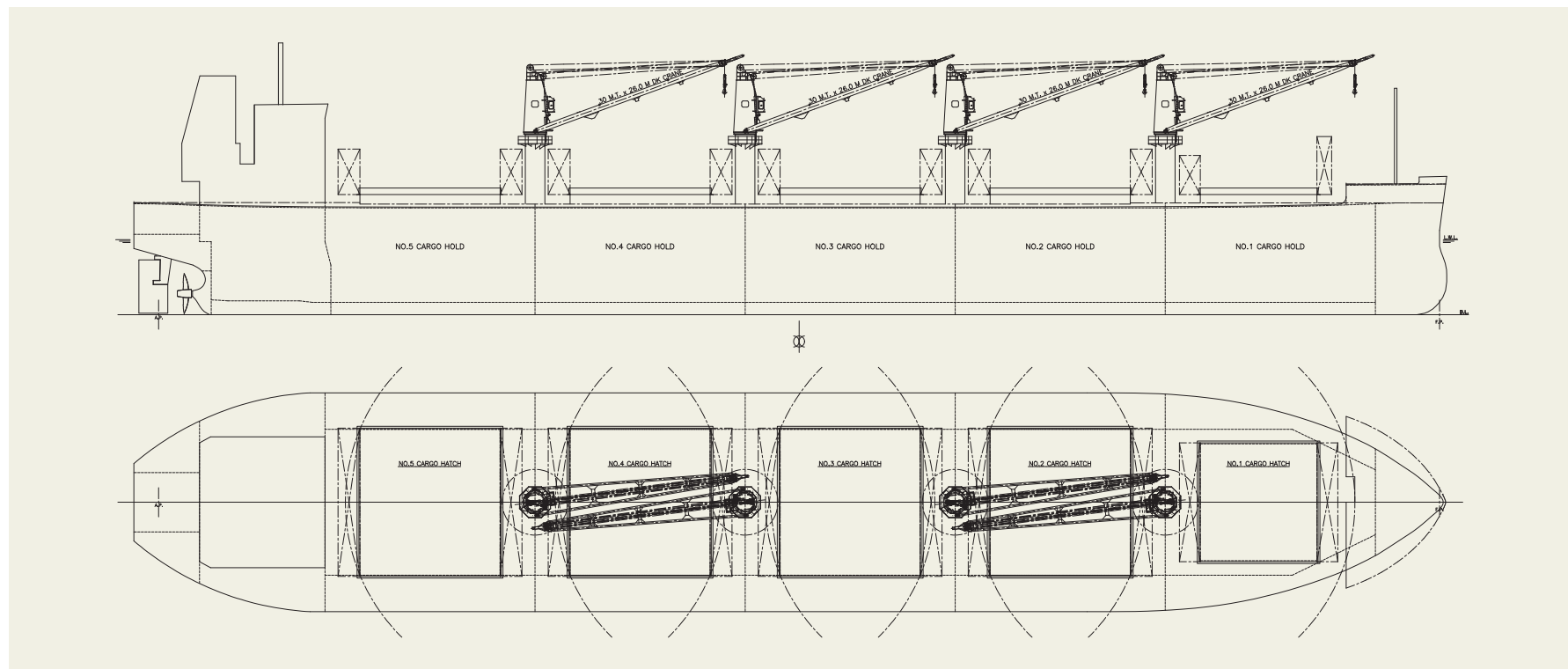
Features

1. For unitized cargo and easy cargo handling, this vessel has box shaped cargo holds.
2. Wide hatch cover improves cargo handling efficiency.
3. Advanced Flipper Fins & Rudder Fin which improve propulsion efficiency are installed.
4. Special bow form, Seaworthy Bow improves speed performance in rough sea conditions as compared to ordinary bows.
5. Dangerous cargoes also can be loaded in cargo hold.

PRINCIPAL PARTICULARS

Length (o.a.).....	179.99 m
Breadth (mld.).....	30.00 m
Depth (mld.).....	15.33 m
Draft (mld.).....	10.826 m
Gross tonnage.....	23602
Deadweight.....	39,260 MT

Main engine	J-ENG 6UEC42LSH-Eco-D3-EGR
MCR (kw x rpm)	5,400 kW x 106.0rpm
Speed (service).....	14.00 knots
Complement.....	25
Classification	NK
Loading capacity (grain).....	49,237 m ³
Builder.....	Oshima Shipbuilding Co., Ltd.



FEDERAL PASSION 42,692 DWT Bulk Carrier 50

[Contents](#)

[By Builder](#)

[By Ship Type](#)



FEDERAL PASSION 42,692 DWT Bulk Carrier 50

Contents

By Builder

By Ship Type

Oshima Shipbuilding Co., Ltd. delivered FEDERAL PASSION, a 42,692-DWT bulk carrier, to MK CENTENNIAL MARITIME B.V. in June 2022.

Features

1. This vessel has an optimized hull form for carrying a variety of cargoes, such as grain, ore, cement, hot coil, nickel ore, coal and dangerous cargoes and large deadweight(42,692MT) with shallow draft (10.516m)
2. This vessel has a lot of cargo to be targeted and accommodates various loading patterns.
3. Wide opening folding type hatch cover and four sets of high performance Jib cranes (30MT) are installed for

PRINCIPAL PARTICULARS

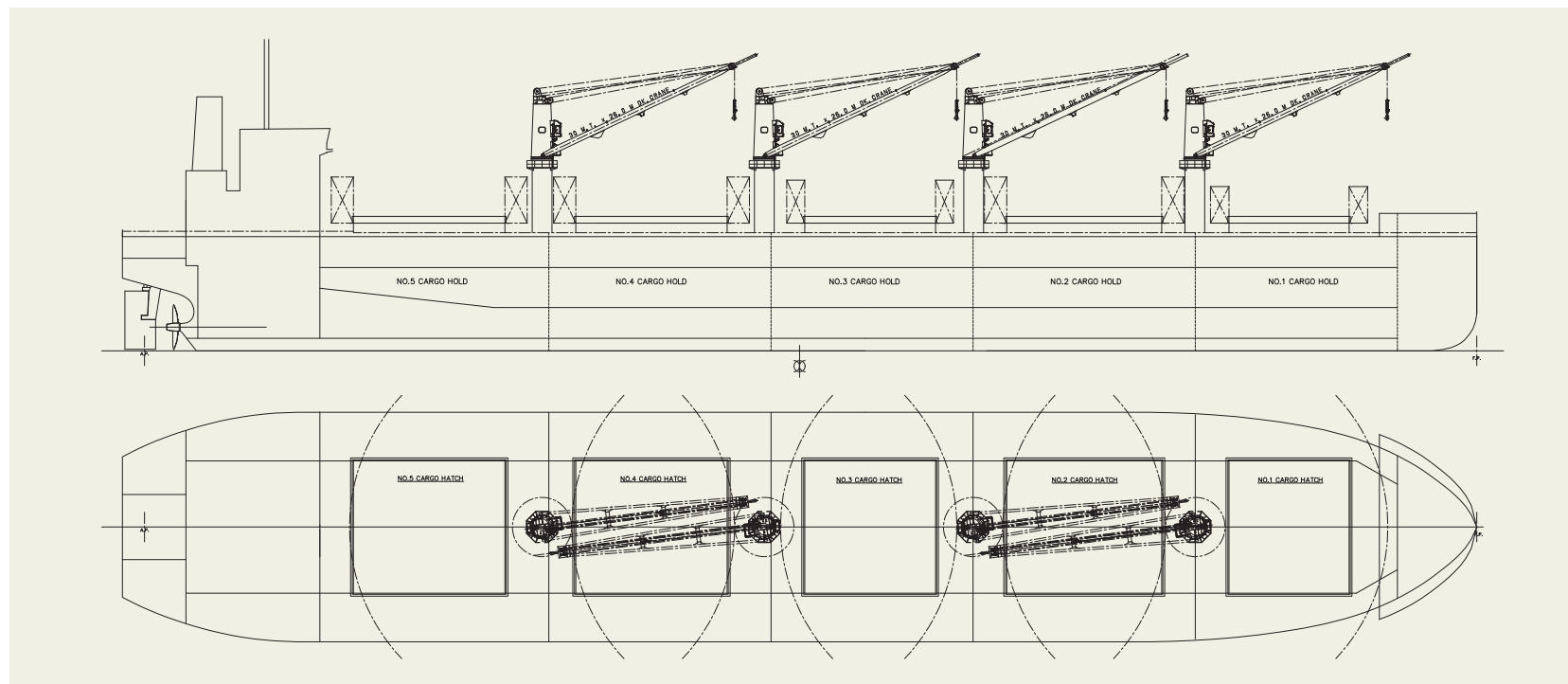
LLength (o.a.).....	182.998 m
Breadth (mld.).....	32.26 m
Depth (mld.).....	15.00 m
Draft (mld.).....	10.516 m
Gross tonnage.....	25831
Deadweight.....	42,692 MT

Main engine	MITSUI MAN B&W 5S50ME-C9.7-EGRBP
MCR (kw x rpm)	5,720 kW x 100.0 rpm
Speed (service).....	14.00 knots
Complement.....	25
Classification	NK
Loading capacity (grain).....	55,131 m ³
Builder.....	Oshima Shipbuilding Co., Ltd.

efficient cargo handling.

4. Advanced Flipper Fins & Rudder Fin which improve propulsion efficiency are installed.

5. Special bow form, Seaworthy Bow improves speed performance in rough sea conditions as compared to ordinary bows.



LILY GLORY 58,351 DWT Bulk Carrier 51

[Contents](#)

[By Builder](#)

[By Ship Type](#)



LILY GLORY 58,351 DWT Bulk Carrier 51

Contents By Builder By Ship Type

Oshima Shipbuilding Co., Ltd. delivered LILY GLORY, a 58,351-DWT bulk carrier, to LEEWARD NAVIGATION, S.A. in January 2023.

Features

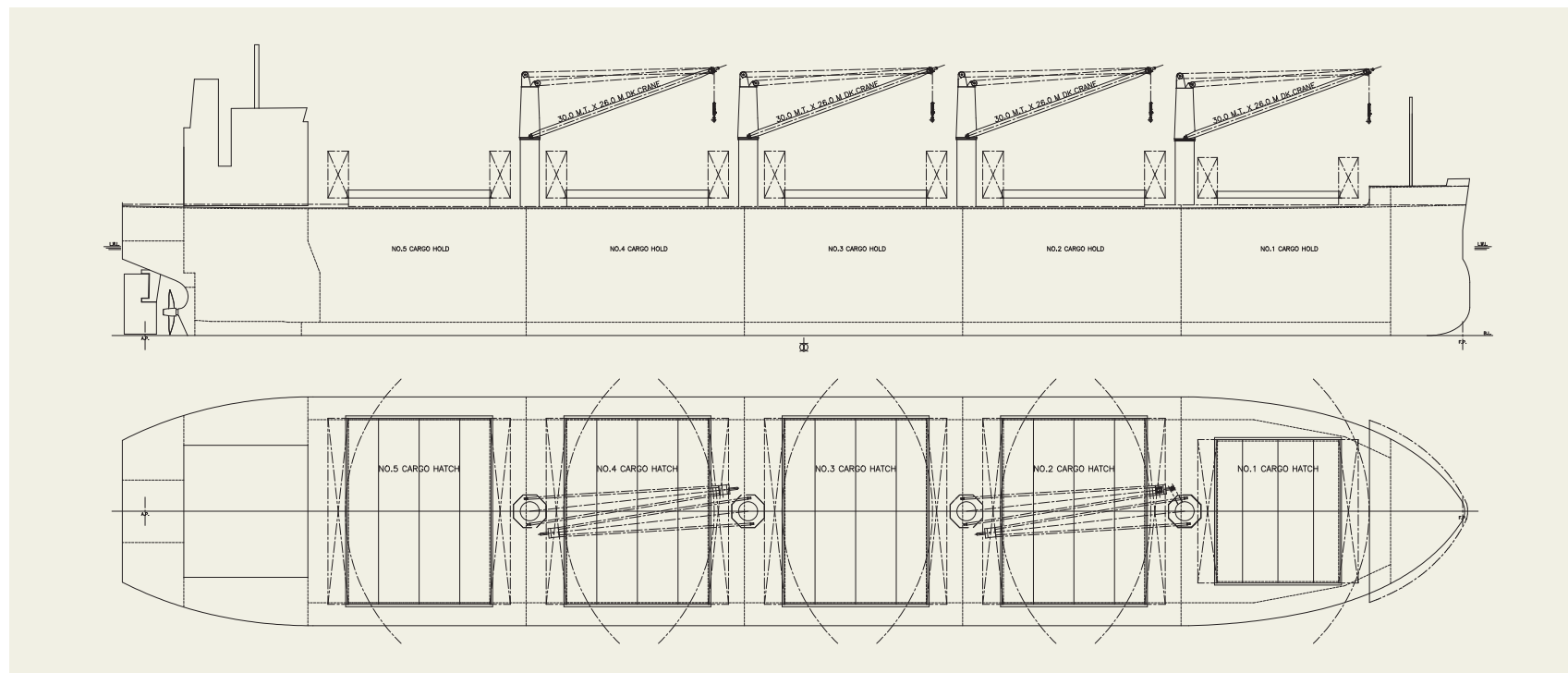
1. This vessel has an optimized hull form for carrying grain, ore, coal, hot coil, steel pipe, cement and dangerous cargoes, and large deadweight (58,351 MT) with shallow draft (13.048 m).
2. Due to wide opening folding type hatch cover and without top side tank, it is possible to prevent the cargo from being damaged due to handling by loading directly with crane.

PRINCIPAL PARTICULARS

Length (o.a.)	189.99 m
Breadth (mld.)	32.26 m
Depth (mld.)	18.54 m
Draft (mld.)	13.048 m
Gross tonnage	33110
Deadweight	58,351 MT

Main engine	J-ENG 6UEC50LSH-Eco-C3-EGR
MCR (kw x rpm)	6,560 kW x 95.0 rpm
Speed (service)	14.30 knots
Complement	24
Classification	NK
Loading capacity (grain)	66,937 m ³
Builder	Oshima Shipbuilding Co., Ltd.

3. Advanced Flipper Fins & Rudder Fin which improve propulsion efficiency are installed. performance in rough sea conditions as compared to ordinary bows.
4. Special bow form, Seaworthy Bow improves speed



FEDERAL HAMILTON 34,763 DWT Bulk Carrier 52

[Contents](#)

[By Builder](#)

[By Ship Type](#)



FEDERAL HAMILTON 34,763 DWT Bulk Carrier 52

Contents By Builder By Ship Type

Oshima Shipbuilding Co., Ltd. delivered FEDERAL HAMILTON, a 34,763-DWT bulk carrier, to FEDERAL TRIDENT LTD., in August 2023.

Features

1. The vessel is an ICE – 1C class Laker
2. This vessel has been designed with a large deadweight and shallow draft
3. For unitized cargo and easy cargo handling, this vessel has box shaped cargo hold.
4. Four sets of high performance jib cranes (35MT) are installed for efficient cargo handling.
5. Bow thruster and High-lift rudder of mariner type (with

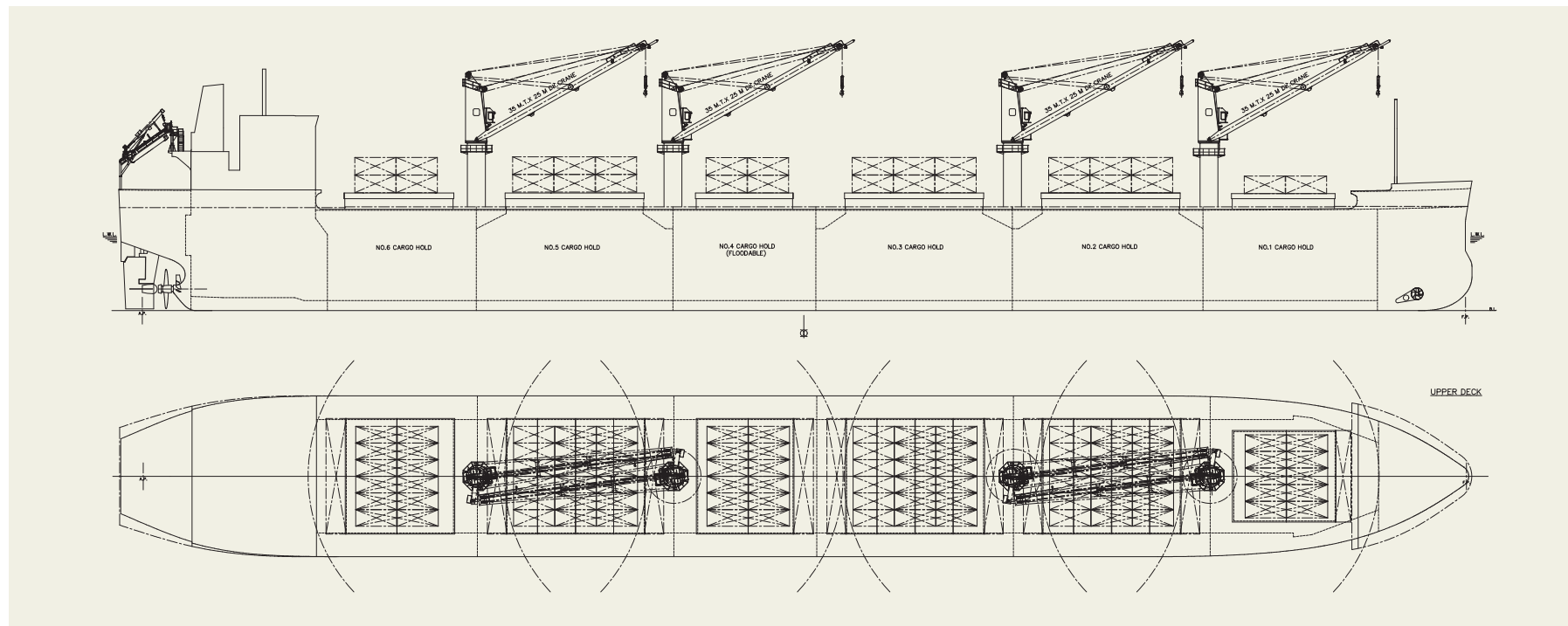
PRINCIPAL PARTICULARS

Length (o.a.)	199.98 m
Breadth (mld.)	23.762 m
Depth (mld.)	14.85 m
Draft (mld.)	10.861 m
Gross tonnage	21043
Deadweight	34,763 MT

Main engine	MITSUI-MAN B&W 5S50ME-C9.7-HPSCR
MCR (kw x rpm)	6,050 kW x 97.0 rpm
Speed (service)	14.15 knots
Complement	25
Classification	DNV
Loading capacity (grain)	41,607 m ³
Builder	Oshima Shipbuilding Co., Ltd.

6. Special bow form Seaworthy Bow improves speed performance in rough sea conditions compared ordinary bows.
6. Special bow form Seaworthy Bow improves speed per-

formance in rough sea conditions compared ordinary bows.



HACHINOHE MARU 60,288 DWT Wood Chip Carrier 59

[Contents](#)

[By Builder](#)

[By Ship Type](#)



HACHINOHE MARU 60,288 DWT Wood Chip Carrier 59

Contents By Builder By Ship Type

Oshima Shipbuilding Co., Ltd. delivered HACHINOHE MARU, a 4,326,650 cub. ft Wood Chip carrier, to RACCOON SHIPHOLDING S.A. in December 2021.

Features

1. Specially designed vessel to carry wood chips.
2. This vessel has large cargo hold for wooden chip loading and its self-unloading system with three electric deck cranes, four hoppers and conveyor systems achieves, four hoppers and conveyor systems achieves high unloading efficiency.
3. To prevent chip scattering, anti-scattering nets and water spraying system are equipped at hopper.

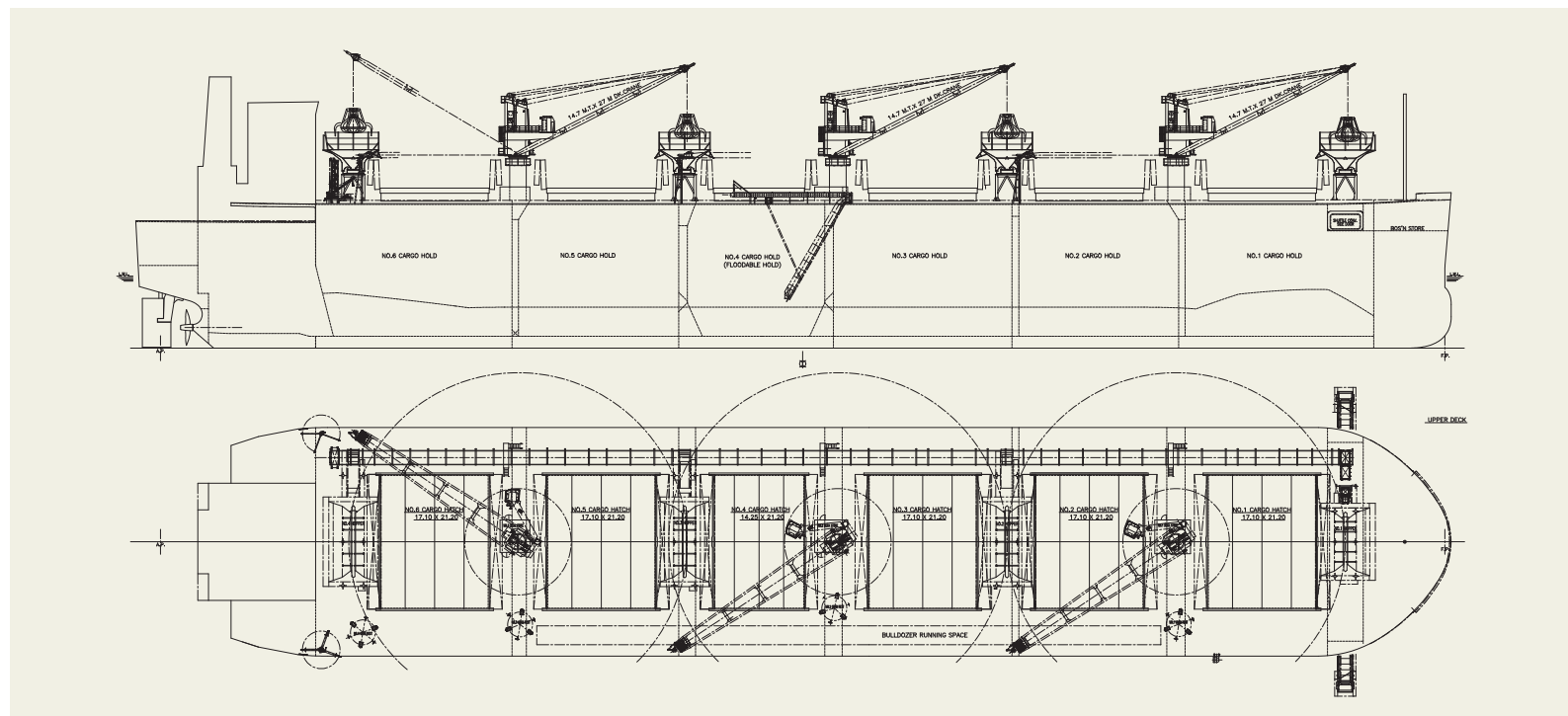
PRINCIPAL PARTICULARS

Length (o.a.).....	209.96 m
Breadth (mld.).....	37.00 m
Depth (mld.).....	22.80 m
Draft (mld.).....	11.50 m
Gross tonnage.....	49887
Deadweight.....	60,288 MT

Main engine.....	J-ENG UE 6UEC50LSH-ECO-C2
MCR (kw x rpm).....	7,430 kW x 92.0 rpm
Speed (service).....	14.20 knots
Complement.....	25
Classification.....	NK
Loading capacity (grain).....	122,517 m ³
Builder.....	Oshima Shipbuilding Co., Ltd.

4. Advanced Flipper Fins & Rudder Fin which improve propulsion efficiency are installed.
5. Special bow form, Seaworthy Bow improves speed

performance in rough sea conditions as compared to ordinary bows.



DYNA FLORESTA 52,804 DWT Wood Chip Carrier 60

[Contents](#)

[By Builder](#)

[By Ship Type](#)



DYNA FLORESTA 52,804 DWT Wood Chip Carrier 60

Contents

By Builder

By Ship Type

Oshima Shipbuilding Co., Ltd. delivered DYNA FLORESTA, a 3,824,652 cub. ft Wood Chip carrier, to STEVENS LINE CO.,LTD. in September 2022.

Features

1. Specially designed vessel to carry wood chips.
2. This vessel has large cargo hold for wooden chip loading and its self-unloading system with three electric deck cranes, four hoppers and conveyor systems achieves, four hoppers and conveyor systems achieves high unloading efficiency.
3. To prevent chip scattering, anti-scattering nets and water spraying system are equipped at hopper.

PRINCIPAL PARTICULARS

Length (o.a.).....	209.99 m
Breadth (mld.).....	32.26 m
Depth (mld.).....	22.98 m
Draft (mld.).....	11.50 m
Gross tonnage.....	43917
Deadweight.....	52,804 MT

Main engine	MITSUI MAN B&W 6S50ME-C9.7-EGRBP
MCR (kw x rpm)	7,260 kW x 99.0 rpm
Speed (service).....	14.20 knots
Complement.....	25
Classification	NK
Loading capacity (grain).....	108,302 m ³
Builder.....	Oshima Shipbuilding Co., Ltd.

4. Advanced Flipper Fins & Rudder Fin which improve propulsion efficiency are installed.
5. Special bow form, Seaworthy Bow improves speed

- performance in rough sea conditions as compared to ordinary bows.
6. SOx scrubber is installed for environmental friendliness.

